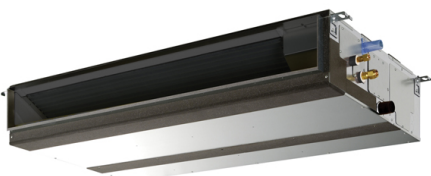


# Air Conditioning

## Product Information

### PEFY-P25VMA-E : Indoor Unit

Ceiling Concealed Ducted



The PEFY-P-VMA-E ducted indoor unit is concealed within the ceiling space to allow unobtrusive air conditioning. Flexibility of duct layout allows air flow patterns to be arranged to suit any application.

## FEATURES



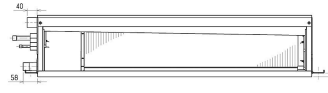
### INDOOR

Heating Capacity (kW) (nominal)	3.2
Cooling Capacity (kW) (nominal)	2.8
High Performance Heating Capacity (kW) (UK)	3.2
COP Priority Heating Capacity (kW) (UK)	3
Cooling Capacity (kW) (UK)	2.7
Cooling Capacity (Hi-Sens Mode) (kW) (UK)	2
SHF (UK)	0.78
SHF (Hi-Sens Mode) (UK)	0.9
Heating Power Input (kW) (nominal)	0.04
Cooling Power Input (kW) (nominal)	0.06
Airflow (m <sup>3</sup> /min) - Lo-Mi-Hi	6 - 7.5 - 8.5
External Static Pressure (Pa)	35 - 70 - 150
Sound Pressure Level (dBA) - Lo-Mi-Hi	23 - 25 - 26
Weight (kg)	23
Dimensions (mm) Width	700
Dimensions (mm) Depth	732
Dimensions (mm) Height	250
Electrical Supply	220-240V, 50HZ
Phase	SINGLE
Running Current (A) - Heating / Cooling	0.42 / 0.53
Fuse Rating (BS88) - HRC (A)	6
Mains Cable No. Cores	3

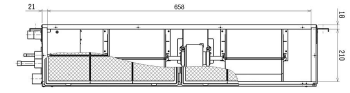
### DIMENSIONS

PEFY-P25VMA-E

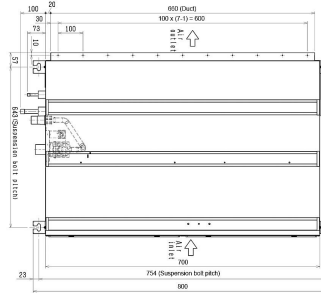
Front View >



Rear View >



Upper View >



Side View >

